

THORN
LIGHTING



TONIC

High-performance spotlights with interchangeable reflectors, compact size and glare control



**WE
MAKE
LIGHT
WORK**

THE FLEXIBLE SPOTLIGHT FAMILY

WITH INTERCHANGEABLE REFLECTORS, GLARE CONTROL AND HIGH COLOUR RENDERING OUTPUT

Tonic features a low-glare, recessed LED engine that delivers high colour rendering in a slim and compact body. Interchangeable reflectors for multiple wide and narrow beam angles result in a spotlight that can rapidly adapt to different seasonal needs; ideal for fashion and grocery applications. Simply 'twist and lock' into place. Flexibility is further enhanced by the option to specify Tonic in medium, small and extra small formats, providing appropriate lumen levels and delivering discreet accent lighting where required.

A simplified design with recyclable, switchable components offers easy maintenance and supports an extended lifetime. Tonic spotlights have EMEA and APAC certifications and compatibility with industry-standard 3-phase track systems, making them a truly global lighting solution. The Tonic range complements the high-lumen, large-body Graffiti spotlight, also available with an integrated 3-phase track adapter. With a sleek and minimalistic family look across all four form factors, Thorn spotlights are the answer to modern retail needs.

Tonic spotlights will enhance the look of items on display while maintaining comfort for customers and the workforce alike. A long 50 000-hour lifetime (L80) and an efficient LED engine make these luminaires ideal for lighting refurbishment projects as well as new buildings.



Retail



Education



Office



Hotels



Hospitality



Entertainment

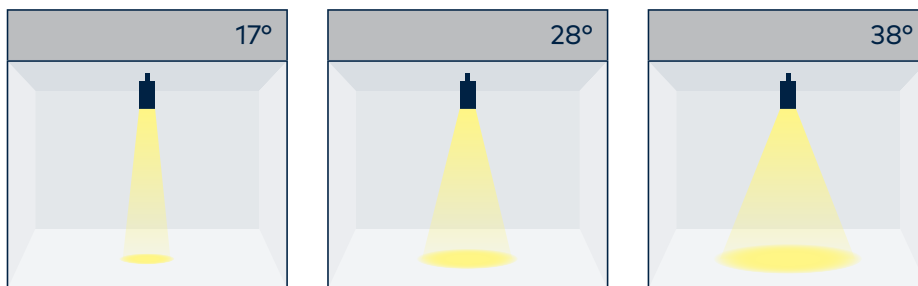


THE COMPLETE SPOTLIGHT SOLUTION

Tonic really is the lighting designer's friend thanks to its inherent flexibility by design. A consistent family look is achieved across the three spotlight sizes, with diameters of 55 mm (Extra Small), 68 mm (Small) and 85 mm (Medium).

Each Tonic spotlight is capable of a high-lumen output for its size, up to 3650 lm (Medium). Additionally, what sets Tonic apart from the competition is its ability to deliver accent lighting with switchable beam angles, thanks to optional interchangeable reflectors comprising of Spot beam (17°), Flood beam (28°), Wide Flood beam (38°), in addition to a Very Wide Flood beam (60°) reflector, available on request.

Across the range, Tonic is delivered in a stylish and minimalistic design. The casing is finished in a matt white or black as standard, but any RAL colour can be specified as an option.



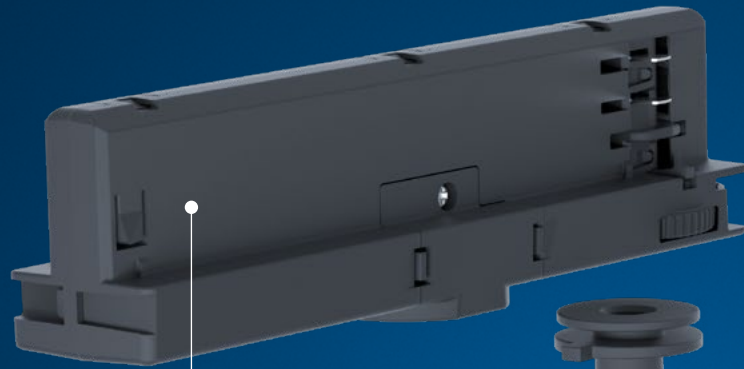
- 17° Spot – Suitable for pinpointing items like a small fashion accessory such as a bag or hat, fresh food in a retail or hospitality display
- 28° Flood – Suitable for highlighting larger displays, such as clothing store mannequins, racks and shelving, promotional sale items and accessories
- 38° Wide Flood – Suitable for lighting wider areas like ceiling suspended signage and retail counter display units, hotel reception desks, or a lobby



CONTROLLED LIGHT

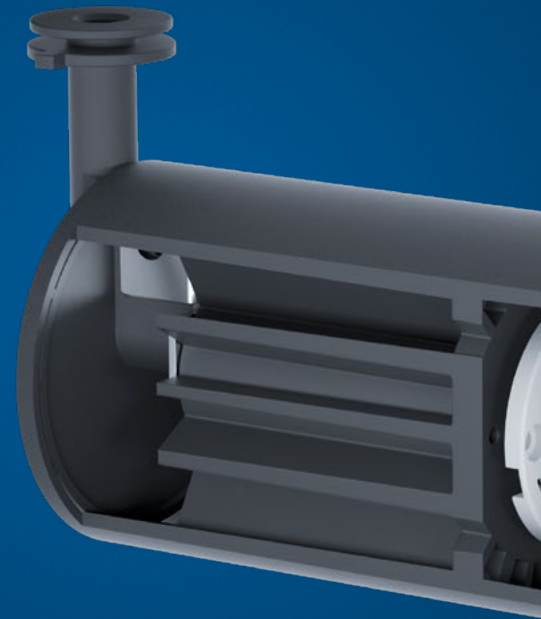
As staff in retail and hospitality often work long hours, it's important that the spotlights are not too dazzling – for their comfort and that of customers. Tonic's front black ring, deep recessed LED chip and sputtered polycarbonate reflector all work collectively to deliver high optical precision and minimise glare, which can help reduce eye fatigue.

CONFIGURE THE TONIC SPOTLIGHT THAT'S RIGHT FOR YOUR APPLICATION



UNIVERSAL 3-PHASE TRACK ADAPTER COMPATIBILITY

A global solution, EMEA and APAC standard compliance ready. Tonic spotlights are on/off as standard, and dimmable with an optional DALI driver



INTERCHANGEABLE REFLECTORS

Tonic is supplied in one of three standard beam angles, but to extend the useful lifetime of the spotlight family, Thorn provide optional interchangeable reflectors as a helpful accessory. The reflectors are designed to be swapped using the simple 'twist and lock' mechanism, so they can be fitted in a matter of seconds. Ideal for fashion and grocery applications where adaptation to different seasonal needs is commonplace



COLOUR ACCURATE LED WITH GREAT EFFICIENCY

All sizes of Tonic feature a chip-on-board LED that delivers a great balance of high colour rendering (CRI > 90) so that the items in the spotlight will look their best, with vivid, accurate colours, as well as having high efficacy to reduce CO₂ footprint and increase cost efficiency

GLARE REDUCTION HONEYCOMB LOUVRE

A highly practical optional accessory, the louvre can provide additional protection from glare

TWIST AND LOCK RING

Thanks to the 'twist and lock' ring, the optional reflectors and anti-glare honeycomb louvre can be changed in seconds

PROTECTION GLASS

The intricate optics and reflector in a Tonic spotlight are protected from dust and accidental damage from fingerprints during repositioning of the spotlight, ensuring great light quality



FILTERED LIGHT OUTPUT

An optional honeycomb louvre can be attached to the black ring at the front of Tonic spotlights. The louvre provides additional glare reduction by filtering the directional light from being easily viewed at a side angle. This can be useful in an environment where multiple spotlights are installed, such as in a retail store, an office reception area or a hotel lobby. Without the louvre, many spotlights installed close together on a track may be overwhelming to a customer or employee.



GLASS PROTECTION COVER

To safeguard the reflector from dust as well as accidental fingerprints from a store employee who may reposition the spotlight (as retail displays often change size and position), a protective high-quality glass cover is fitted behind the front ring, ensuring the reflector is kept pristine and the optimal light output is preserved.



SUSTAINABILITY IN ITS DNA

Tonic was developed with sustainability design principles in mind. A key feature of Tonic spotlights is the ability to change the product's beam angle by swapping out the spotlight's reflector for a different reflector with a simple 'twist and lock' action.

This unlocks the possibility of the spotlight being used for a much longer lifetime, in different spaces in the same building, or to light the same space when the merchandise or furniture has been changed or moved to a different place, creating a new scene that needs to be re-lit.

Thorn has engineered the Tonic spotlight family to have strong endurance with a 50 000 hour lifetime (L80) as well as a high efficacy of 120 lm/W, more light with less power.

The simplified design includes many detachable components and recyclable aluminium and plastic parts are used. A straightforward upgrade and maintenance pathway which will help to extend the life of the luminaire. The 3-phase track integrated driver can be easily swapped out by a competent qualified person. A customer-friendly warranty service and recycling of failed components is supported.



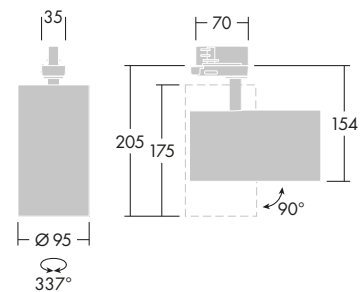


Tonic family

THORN SPOTLIGHT FAMILY

TONIC AND GRAFFITI

Tonic is available in three form-factors, Extra Small, Small and Medium sizes. The spotlights have been developed to sit alongside and complement our high-specification Graffiti spotlight, with its large form factor and 3-phase track compatibility, as well as being available in a Thorn Contus-compatible edition.



GRAFFITI

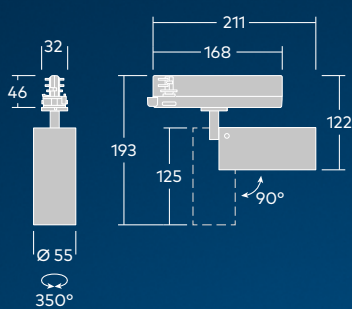
	2800 lm, 3600 lm
	up to 130 lm/W
	3000 K, 4000 K
	Spot (16°), Flood (26°), Wide Flood (52°)

For more information: thornlighting.com/GRAF

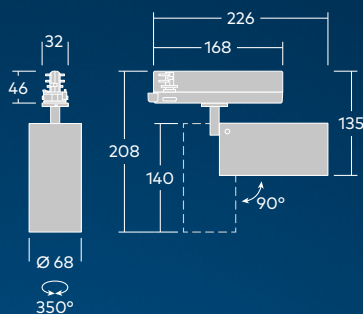


Graffiti (far left) sitting alongside Tonic

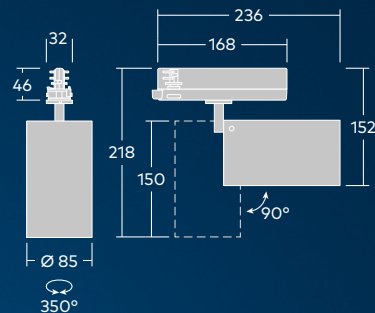
TONIC



TONIC EXTRA SMALL



TONIC SMALL



TONIC MEDIUM



1500 lm (XS), 1700 lm, 2300 lm, 2800 lm (S), 3650 lm (M)



Up to 110 lm/W (XS), Up to 120 lm/W (S and M)



3000 K, 4000 K



> 90



IP20



PC sputtered reflector



Spot (17°), Flood (28°), Wide Flood (38°)



50 000 h L80 @35°C



Compatible with 3-Phase track, Quick and easy to install



55 mm (XS), 68 mm (S), 85 mm (M)



Honeycomb louvre, Protection glass



White, Black



MacAdam 3



GET IN TOUCH

www.thornlighting.com/contact



**5 YEAR
GUARANTEE**

As a globally leading luminaire manufacturer, Thorn Lighting provides a five-year warranty for its complete product range within all European Countries.
thornlighting.com/guarantee

Thorn Lighting is constantly developing and improving its products. All descriptions, illustrations, drawings and specifications in this publication present only general particulars and shall not form part of any contract. The right is reserved to change specifications without prior notification or public announcement. All goods supplied by the company are supplied subject to the company's General Conditions of Sale, a copy of which is available on request. All measurements are in millimetres and weights in kilograms unless otherwise stated.
07/2024 (INT)

**WE
MAKE
LIGHT
WORK**